

PROVIDENCE, R. I.
CITY ENGINEER'S OFFICE
STREET LINE DEP'T.

Nov 28, 1888

014519

Providence, R.I.
This map accompanies
our report of this date.

PLAT OF PLENTY STREET

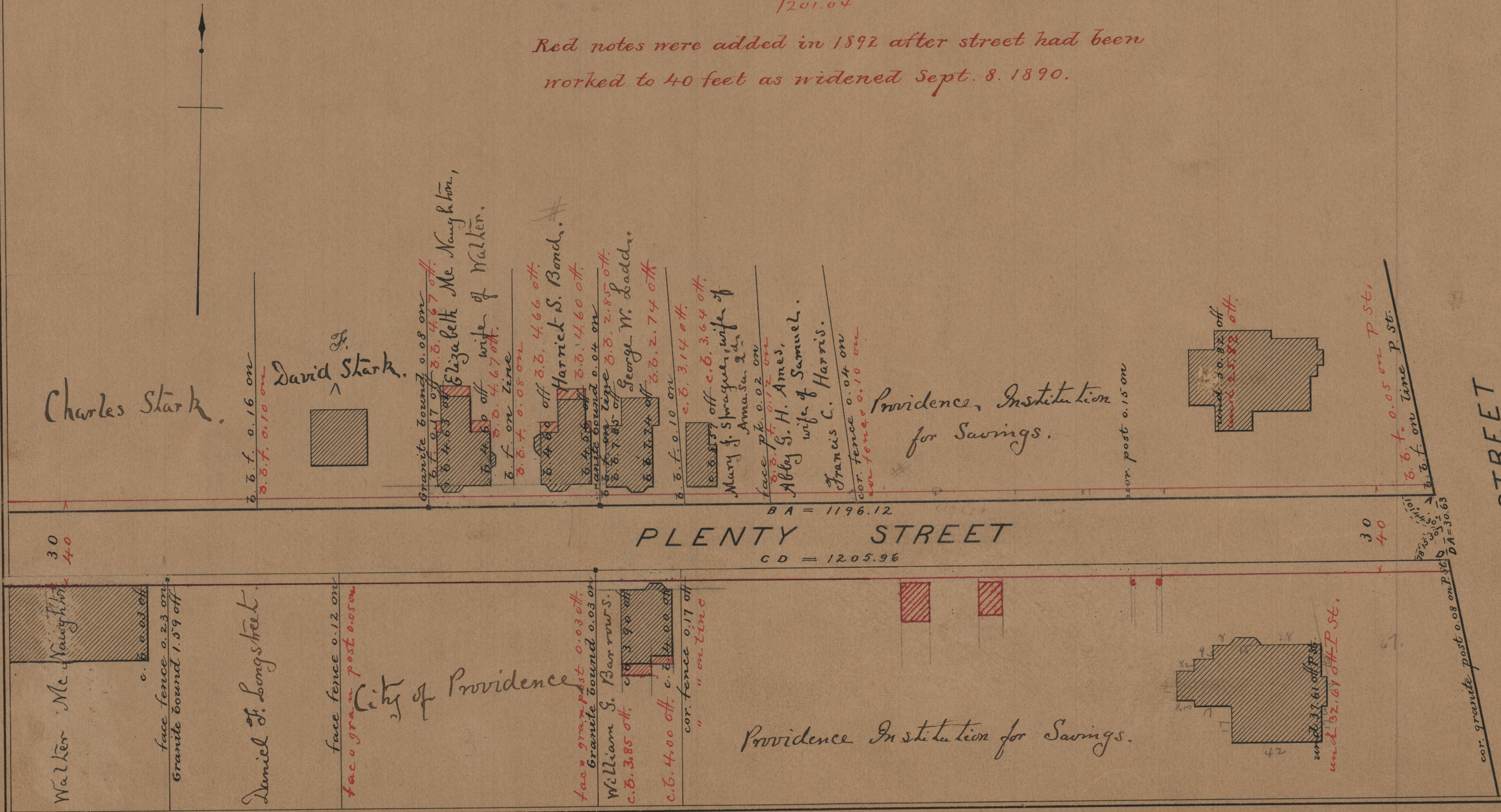
FROM BROAD ST. TO GREENWICH ST.

IN TWO SHEETS.

SCALE 50 FEET PER INCH.

1201.04

Red notes were added in 1892 after street had been
worked to 40 feet as widened Sept. 8, 1890.



BROAD STREET

OFFICE No.	9893
DRAWER	83
SHEET	B-48

83
B-48